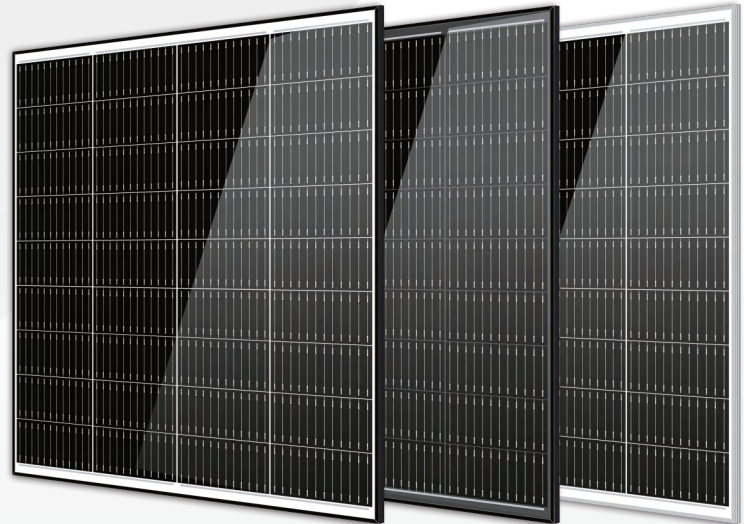


Solar Creek

170–180 Watt MONO-FACIAL MODULE



- IEC61215: 2021
- IEC61730: 2016
- TUV Rheinland Standard
- Lloyd'S Ariel Re
- Solar Performance Insurance
- ISO9001: 2015
- Quality Management System
- ISO14001:
- Environmental Management System
- CE: Europe Standard
- Inmetro Certificate
- ETL Certificate

KEY FEATURES



5BB/MBB
More uniform current collection capability, reducing the current heat loss of the internal cells.



Low Light Features
Higher performance under low light environment.



Higher Output Power
The output power of 36 half-cells Monocrystalline modules is up to 180W.



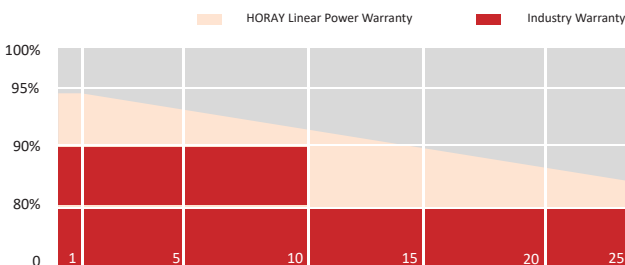
PID Protection
Ensure the attenuation probability caused by PID phenomenon is minimized.



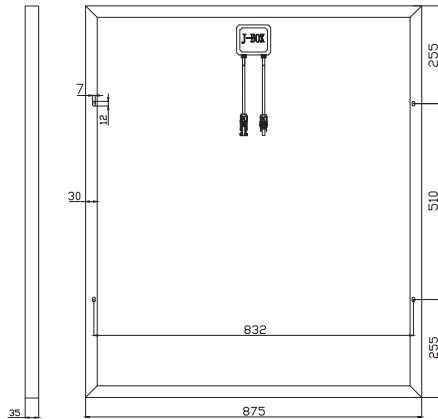
Harsh Environmental Adaptability
Strict salt spray and ammonia corrosion test by the third party.



Load Capacity
Mechanical load tests including wind load 2400 Pa and snow load 5400 Pa.



MECHANICAL DIAGRAMS



SPECIFICATIONS

Weight	10.7kg
Dimension	1020mm*875mm*35mm
Cell Dimension	210*105mm
Cell Amount	4*9 pcs
Maximum System Voltage	1500V
Junction Box	IP67
Frame	Aluminum Alloy
Cable	Length can be customized
Connector	MC4 compatible
Application Level	Class A

ELECTRICAL PARAMETERS AT STC

Module Type	HS170-MHG	HS175-MHG	HS180-MHG
Power	170W	175W	180W
Open Circuit Voltage	25.90V	26.16V	26.28V
Short Circuit Current	8.31A	8.51A	8.71A
Maximum Power Voltage	21.70V	21.80V	21.90V
Maximum Power Current	7.84A	8.03A	8.22A
Module Efficiency	19.05%	19.61%	20.17%

* Under Standard Test Conditions (STC) of irradiance of 1000 W/m², spectrum AM 1.5 and cell temperature of 25°C.

ELECTRICAL PARAMETERS AT NMOT

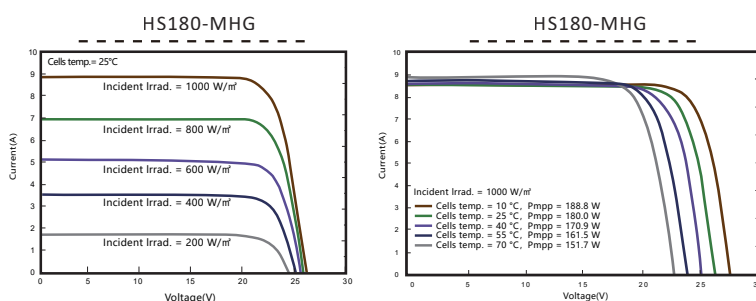
Power	128W	132W	136W
Open Circuit Voltage	24.49V	24.67V	24.80V
Short Circuit Current	6.65A	6.81A	6.97A
Maximum Power Voltage	20.41V	20.56V	20.67V
Maximum Power Current	6.27A	6.42A	6.58A
Module Efficiency	14.34%	14.79%	15.24%

* Under Nominal Module Operating Temperature (NMOT), irradiance of 800 W/m², spectrum AM 1.5, ambient temperature 20°C, wind speed 1 m/s.

TEMPERATURE CHARACTERISTICS

NMOT	45±2°C	Temp Coefficient of ISC	+0.05%/°C
Temp Coefficient of VOC	-0.28%/°C	Temp Coefficient of Pmax	-0.34%/°C

IV CHARACTERISTICS



MAXIMUM RATING

Power selection	0~+5W
Measuring uncertainty of Pm	0~±3%
Operating Temperature	-40°C~+85°C
Wind Load/Snow Load	2400pa/5400pa
Fuse Current	15A

5 YEARS Quality Warranty

25 YEARS Power Warranty

CAUTION: READ SAFETY AND INSTALLATION INSTRUCTIONS BEFORE USING THE PRODUCT.

©2024 Horay Solar Co.,Ltd. All rights reserved. Specifications included in this datasheet are subject to change without notice.

This type is a custom solar module. Please confirm with HORAY SOLAR before ordering.

Version number: MHO_EN_2024_A